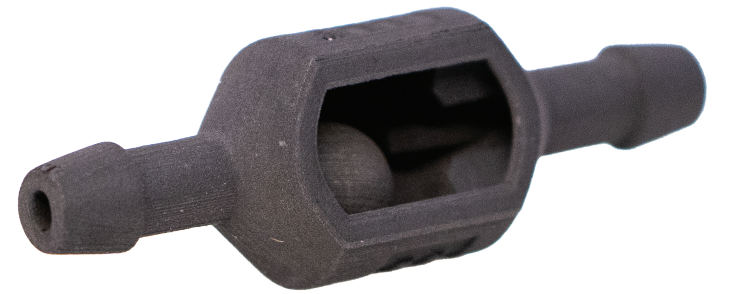


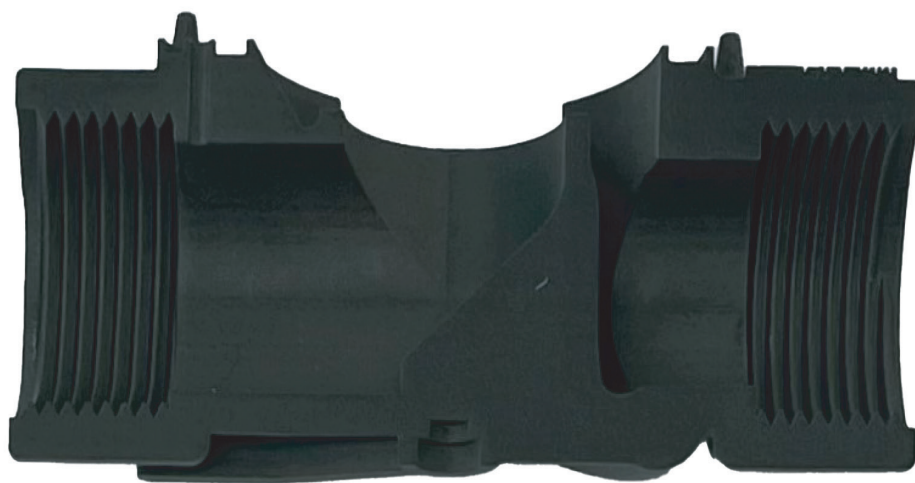
FLUID AND AIRFLOW



CHECK VALVE



SPRINKLER VALVE



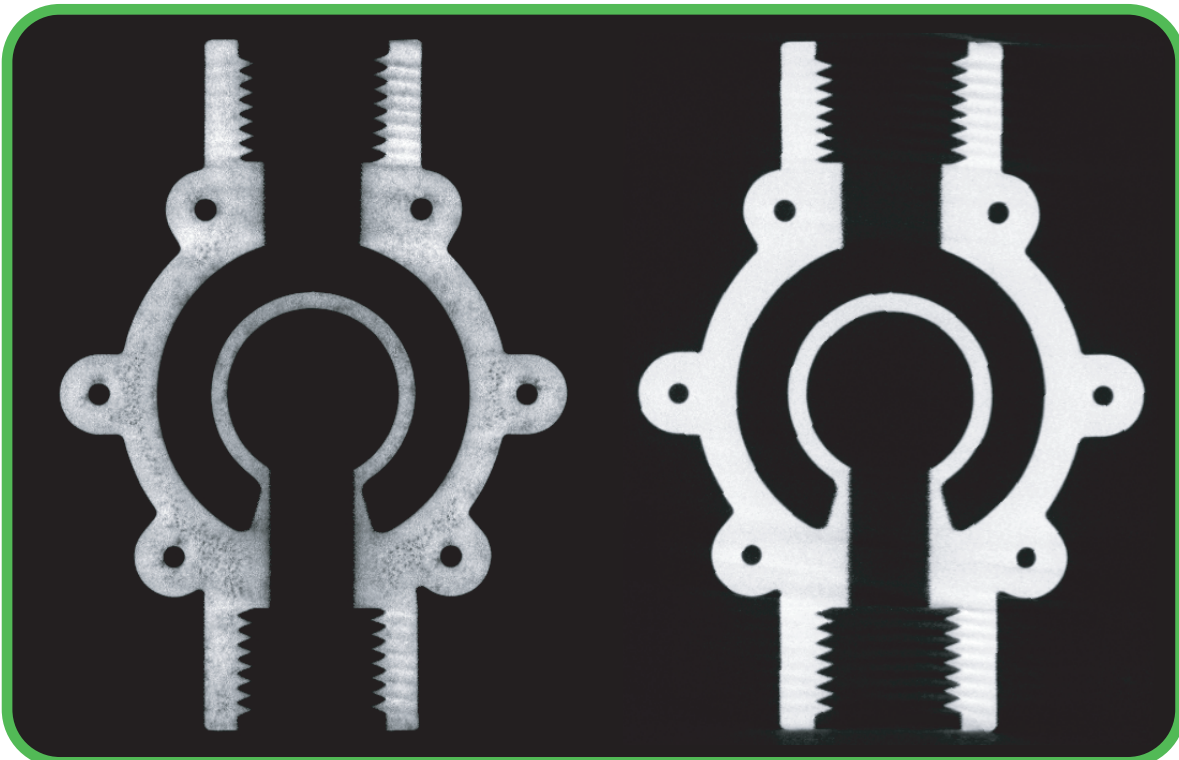
Chemically resistant to aqueous acids, alkalis, concentrated hydrochloric, and phosphoric acids

Working threads with no post processing

Easily print any part with varying wall thickness

Fully dense real ABS material 1.04g/cm^3

CT IMAGE



Powder Bed Fusion
Visible Voids

STEP Technology
Fully Dense

PRESSURE GUAGE



Pressure Test
Manifold

RESULTS

- Patented ToP (Top of Part) scans capture and fill each layer eliminating voids or partially formed layers
- A completed job log is saved with each build

RESULTS

- Printed thread features tested to and holds $> 100\text{psi}$